



HIGH MOUNTAIN HUNTS
Joel Pat Latham, President
 3409 Redstone Drive
 Arlington, Texas 76001-6507
www.HighMountainHunts.com
Latham@HighMountainHunts.com
 Cell: 817-371-4340

NAMIBIA

a

[Click for Additional Photos](#)

Hunt Greater Kudu, Oryx, Eland, Waterbuck, Giraffe, Impala, Red Hartebeest, Burchell's Zebra, Black Wildebeest, Blue Wildebeest, Blesbok, Springbuck, Steenbok, Duiker and more in Namibia

Namibia offers the ultimate free-ranging hunting experience where you can sleep in a new lodge that has five in suite chalets overlooking a huge waterhole. With us the hunt doesn't stop when you step out of the field, we give you a true African Hunting Safari feeling. Witness the beautiful red sand, the camel thorn trees and the vast amount of free-roaming wildlife that you will only find in Namibia. This concession is located 125 miles East of Windhoek in the Black Nossob Conservancy which is 172,000 acres of privately owned land. These privately owned farms work together to protect the wildlife while still farming. Hunting is done by driving around with a well-equipped 4x4 vehicle until game, or until signs of game is spotted. The game is then stalked on foot. This method allows all ages to enjoy a good hunt, as it doesn't require extreme fitness or health. Hot water, 220V power, telephone, mobile services and daily laundry services are a standard.



Season: Feb. 1-Nov. 30

Trophy Fees:

Greater Kudu	\$1,750
Eland	\$2,450
Oryx	\$720
Oryx over 40"	\$900
Waterbuck	\$3,250
Giraffe	\$2,700
Impala	\$850
Red Hartebeest	\$720
Burchell Zebra	\$1,550
Black Wildebeest	\$1,440
Blue Wildebeest	\$1,050
Blesbok	\$850
Springbuck	\$490
Steenbok	\$400
Duiker	\$400
Warthog	\$400
Baboon	\$150
Jackal	\$100
Caracal	\$600
Ostrich	\$450
Brown Hyena	\$3,000
African Wild Cat	\$600



Daily Rates:

Hunter 1 x 1:	\$390
Hunter 2 x 1:	\$320
Observer:	\$170

[Click for Weather](#)



Hunted by arrangement

Hartmann Zebra	\$1,600
Leopard-Guaranteed	\$26,000 (includes Daily rate)
Cheetah	\$8,000
Spotted Hyena	\$1,500
Klipspringer	\$1,500
Sable	\$10,000+
Roan	\$10,000+
Black Faced Impala	\$2,000
Damara dik-dik	\$3,000
Black Springbuck	\$1,900
White Springbuck	\$3,000
Red Lechwe	\$4,900
Tetsebe	\$4,900
Nyala	\$4,900
Golden Oryx	P.O.R.
White Blesbuck	\$1,500
White Rhino	P.O.R.
Buffalo	P.O.R.
Elephant	P.O.R.
Lion	P.O.R.

A minimum of 7 hunting days for plain game will be charged. Prices on game hunted on arrangement may change at any time due to quota and should be confirmed before booking.

Option #1

This is a good 7 day package if it is your first time in Africa

- 1 Oryx
- 1 Red Hartebeest
- 1 Warthog
- 1 Steenbuck
- 1 x 1 hunting = \$4,500
- 2 x 1 hunting = \$4,000

Kalahari Package

A 7 day hunt during which you can enjoy hunting some of the major plains game animals in Namibia. Our Kudu and Oryx are some of the best in Southern Africa! You will enjoy seeing many different species in one day.

- 1 Greater Kudu
- 1 Oryx
- 1 Red Hartebeest
- 1 Warthog
- 1 Springbuck
- 1 x 1 hunting = \$5,800
- 2 x 1 hunting = \$5,200 each hunter

Namibian Plans Game Special

7 days, 5 animals

Months of February and March or September through November

- 1 Oryx or Blue Wildebeest
- 1 Red Hartebeest
- 1 Springbuck or Duiker
- 1 Warthog
- 1 Steenbuck
- 1x1 hunting = \$3,600
- 2x1 hunting = \$2,950



Arrival and departure days will be charged as a normal hunting day. A minimum of 7 hunting days for plain game will be charged as a standard. Prices are subjected to change due to possible currency fluctuations. The lodge consists of a big entertainment area with a bar, swimming pool and barbeque. The accommodations include four big chalets each sleeping 2 persons with en-suite bathrooms and another family chalet that can accommodate 4 sharing a small kitchen and separate shower and toilet facilities, all conventional necessities. We can easily accommodate 12 clients. Also available for those who want to experience nature on your doorstep, wake-up refreshed in the morning and watch as oryx, hartebeest and warthogs graze around your 6 luxury tents at night. Tents each sleeping two persons and have their own full electricity, warm water, heaters and comforters and all conventional necessities. Nature is brought to you. This is an experience you will not get in a bungalow. Sit around a cozy fire at night and gaze at the endless stars, forget about the world and just enjoy a stress-free time. The accommodation include three meals a day, daily laundry



Price Includes: Service of a licensed hunting guide, tracker and skinner, hunting vehicle and support team, field preparation of trophies, delivery of trophies to a local taxidermist or shipping agent, 15% VAT included in all prices, transportation from International Airport in Windhoek, Namibia to lodge and back, full accommodation with catering and laundry service.

Visas: Bearers of U.S. passports who plan to visit Namibia for tourism or informal business meetings for less than 90 days may obtain visas at the port of entry free of charge.

Price Excludes: Cost per animal hunted and fees for animals wounded and lost, rifle rental (US\$ 25 per day with ammunition charged extra), all alcoholic beverages, gratuities, the preparation, packing, documentation and export of trophies from Namibia, transfers to other hunting areas or tourist attractions, any and all air travel (including charter), pre- and post-safari accommodation and meals, all other items of a personal nature, special food, cost of medications, immunizations, hospitalizations and services of doctors, charges for evacuation or rescue by ambulance, helicopter or airplane and any other service or product that is not agreed

or mentioned in this document.

Terms and Conditions: A deposit (50% of the daily rate) is required to confirm booking. The deposit will be forfeited should the booking be cancelled less than six months in advance. The balance is payable upon completion of the hunt in cash, travelers' check, or cashier's check...**no credit cards accepted.** No refunds for late arrivals or early departures. All animals taken or wounded will be charged for. Firearms and ammunition can be rented. Travel insurance is the responsibility of the Client himself. You must also read, understand and accept by signing the [Terms and Conditions](#), [Release of Liability](#) and the [Hunting Contract](#) . Upon entry into the U.S. with a trophy, present to authorities your completed [USFW Form 3-177](#).

How to get there: Fly non-stop from Frankfurt (FRA) to Windhoek, Namibia (WDH) on Air Namibia. Namibia is located in the southwest of Africa bordering South Africa, Botswana, Zambia, Zimbabwe and the Atlantic Ocean. Namibia is reported to be the safest country on the African Continent. Popular tourist attractions are Etosha National Park, Swakopmund, Sossusvlei, the Caprivi Strip and the Namib Desert (where Namibia derives its name).

Namibia Climate: Namibia's climate is typical of semi-desert terrain, hot days and cool nights. With 300 days of sunshine on average per year, Namibia is truly a sunny place. Only during the summer months from November to February does rain occur, mostly as heavy thunderstorms. The interior enjoys two rainy seasons: the short season is between October and December, marked by frequent thunderstorms. Summer is from October to April. Temperatures can reach 100+°F which plummets at night to cool levels. Average daily temperatures range from 68°F to 90°F. Winter is from May to September with wonderful warm days which are contrasted by very cold nights, when temperatures often drop to below freezing.

MISC: Import permits for fire arms and ammunition (up to 60 rounds) are available at the airport in Windhoek.

Please note: only ammunition specific to the firearm may be imported. Handguns and automatic rifles are prohibited. We recommend a comprehensive travel, medical and accident insurance, as well as a baggage insurance which should also cover your rifle. We cannot be held reliable for possible losses, injuries, damages, accidents and delays.



We recommend **RIPCORN** for your Rescue Travel Insurance. They provide a one-stop integrated travel protection program for adventurers and 24/7 contact with medical and security professionals. They are a medical and travel security risk company that provides worldwide evacuation and rescue services from your point of emergency all the way home. www.ripcordrescuetravelinsurance.com/portal/highmtnhunts

We recommend **TRAVEL WITH GUNS**, travel agency, out of San Antonio, Texas. Call Steve Turner at (210) 858-9833. His staff knows each airline and every detail of international regulations when it comes to transporting guns to a hunting destination.

We recommend that you either buy or rent an **Explorer Satellite Telephone**. These telephones offer you unparalleled satellite phone service providing every mobile satellite customer with tailor-made satellite solutions via the Inmarsat, Iridium, Globstar and Thuraya satellite. <http://www.explorersatellite.com>



HIGH MOUNTAIN HUNTS

Joel Pat Latham, President

3409 Redstone Drive

Arlington, Texas 76001-6507

www.HighMountainHunts.com

Latham@HighMountainHunts.com

Office: 817-465-3833

Cell: 817-371-4340

[Click for More Photos](#)

**NAMIBIA - Caprivi Strip
 Hunt for Elephant, Hippo and
 Crocodile**

Elephant Package-IMPORTABLE INTO

Area	Length of Hunt	Elephant Trophy Fee	Total Package	Best Time	Success Rate
Caprivi	10 day-2016	\$30,000	\$64,800	June & July	90+% average 50#



U.S.

This is known as one of the best areas in Africa to hunt big game. It is a very safe for hunters. You will stay in a luxury camp in the Caprivi Strip of Namibia. Other animals are available and can be added to your package. Food in camp is excellent and when a hunter takes his elephant, he will have elephant steak for dinner that night. Most of our concessions are in national parks. One Elephant and two Buffalo permits available in 2017. Price not yet determined.

Most of our concessions are in national parks. One Elephant and two Buffalo permits available in 2017. Price not yet determined.

Hippo and Crocodile Package

Area	Length of Hunt	Hippo Trophy Fee	Crocodile Trophy Fee	Daily Rate	Total Package
Caprivi area	7 day hunt	\$6,000	\$5,000	\$1,400	\$20,800

This is a very good area renowned for big crocs and hippos. You will stay in a fly camp which will not be very luxurious but will have all the necessities for a very comfortable stay. Big hippos and crocs above 13 feet are common.



Included: Daily Rate, 15% value added tax by law, transportation to and from International Airport, service of a licensed hunting guide, tracker and skinner, hunting vehicle and support team, field preparation of trophies, delivery of trophy to local taxidermist or shipping agent, and full accommodations with catering and laundry service. **Visas:** Bearers of U.S. passports who plan to visit Namibia for tourism or informal business meetings for less than 90 days may obtain visas at the port of entry free of charge.

Not Included: Cost per animal hunted and fees for animals wounded and lost, rifle rental (\$25 per day), ammunition (if needed), alcoholic beverages, gratuities to staff, preparation, packing, documentation and export of trophies from Namibia by a taxidermist, transfer to other hunting areas or tourist attractions, air travel, hotels and meals before and after safari, personal items, other tours in Namibia, insurance and medical expenses, , special food, cost of

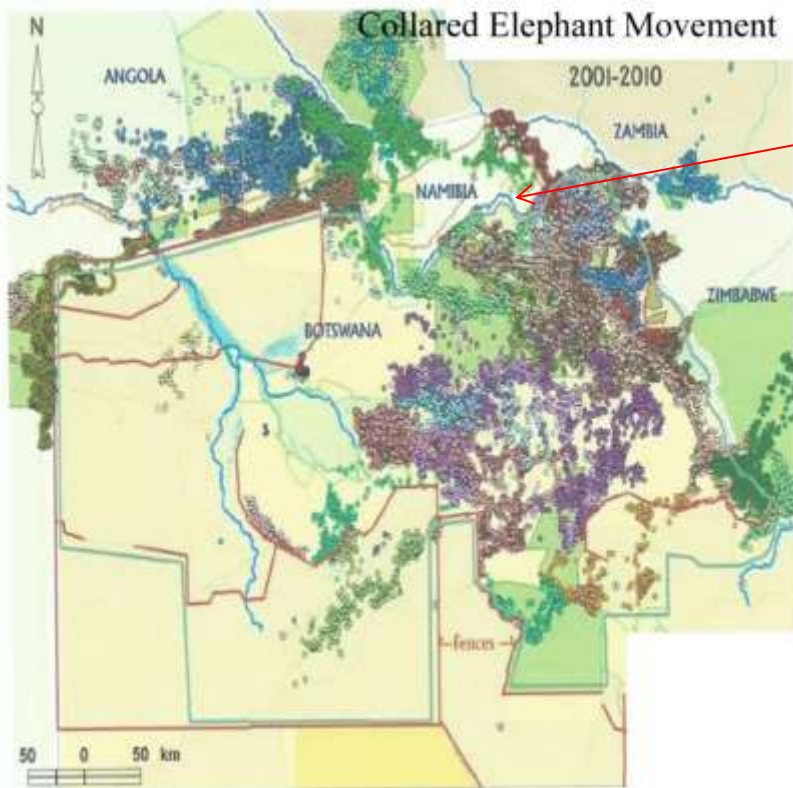
medications, immunizations, hospitalizations and services of doctors, charges for evacuation or rescue by ambulance, helicopter or airplane, and any other service or product that is not agreed or mentioned.

Terms and Conditions: Reservations & Payments per person in U.S. Dollars only: A non-refundable 50% deposit is required to confirm and reserve a hunt date. Final payment is due in Cash, Traveler's Checks or bank draft payable to the outfitter upon arrival. You must also read, understand and accept by signing the [Hunting Contract , Terms and Conditions](#), and [Release of Liability](#). All clients must comply with the U.S. Department of the Interior/Fish and Wildlife Services laws, requirements and conditions. All animals taken or wounded will be charge for. Firearms and ammunition can be hired. Travel insurance is the responsibility of the client.

ELEPHANT HUNT IN THE COMMUNIAL HUNTING CONSERVANCY

Area	Length of Hunt	Elephant Trophy Fee	Total Package	Best Time	Success Rate
Bordering Etosha National Park	10 day-2015	\$30,000	\$80,000	June & July	80+% average 45-65#

- 1 Elephant Available in 2015 for \$80,000
- 2 Free-Ranging Lions available in 2015 at \$70,200
- One Elephant available in 2016 for \$80,000 averaging 50-80#



Caprivi Strip (Panhandle of Namibia) Camp Site (each color of dot represents a different year's count)

We recommend **RIPCORD** for your Rescue Travel Insurance. They provide a one-stop integrated travel protection program for adventurers and 24/7 contact with medical and security professionals. They are a medical and travel security risk company that provides worldwide evacuation and rescue services from your point of emergency all the way home. www.ripcordrescuetravelinsurance.com/portal/highmtnhunts

We recommend that you either buy or rent an **Explorer Satellite Telephone**. These telephones offer you unparalleled satellite phone service providing every mobile satellite customer with tailor-made satellite solutions via the Inmarsat, Iridium, Globstar and Thuraya satellite.

<http://www.explorersatellite.com>

travel security risk company that provides worldwide evacuation and rescue home. www.ripcordrescuetravelinsurance.com/portal/highmtnhunts

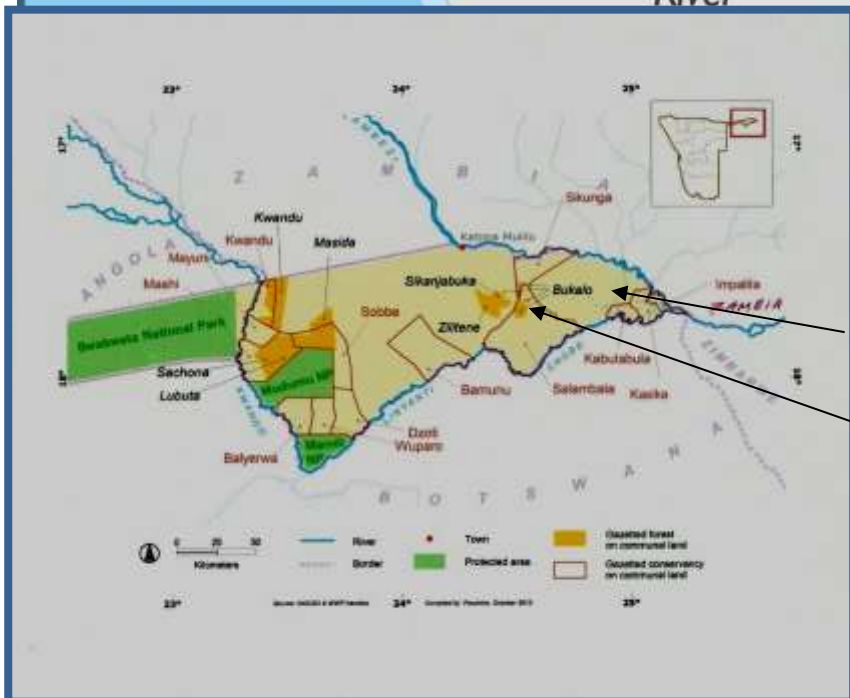
We recommend that you either buy or rent an **Explorer Satellite Telephone**. These telephones offer you unparalleled satellite phone service providing every mobile satellite customer with tailor-made satellite solutions via the Inmarsat, Iridium, Globstar and Thuraya satellite. <http://www.explorersatellite.com>



Elephant, Hippo and Crocodile Area and Camp

COMMUNAL HUNTING CONSERVANCY
Elephant and Free-Ranging Lion

Plains Game Area and Camp



Elephant, Hippo and Crocodile Camps
In the Caprivi Strip

Kabulubula Camp

Salambala Camp

