



## HIGH MOUNTAIN HUNTS

Joel Pat Latham, President

3409 Redstone Drive

Arlington, Texas 76001-6507

[www.HighMountainHunts.com](http://www.HighMountainHunts.com)

[Latham@HighMountainHunts.com](mailto:Latham@HighMountainHunts.com)

Office: 817-465-3833

Cell: 817-371-4340

# HUNT DALL SHEEP IN ALASKA

ch

[Click for More Photos](#)

(Ovis Dalli)

Alaska is a big state with big species, and people come here with big dreams! Dall Sheep hunting is perhaps the most challenging and rewarding adventure in Alaska. Year around scouting forays into the areas we hunt help determine the number of sheep hunts offered. While at times we hunt from base camps, most times we hunt from spike camps at considerable elevations.. Our camps are comfortable and well stocked, with wood stoves to help warm your weary bones and dry your wet clothing if need be.

By prior scouting a spike camp will be set in close proximity to the sheep you'll be hunting. The better your physical conditioning you will find the more enjoyable your hunt. You'll be guided by Alaskan resident guides who have spent many years in the mountains you're hunting. A Dall sheep

makes an outstanding mount with the added bonus of up to 80 pounds of some of the best wild game you'll ever taste.

Again, success rates are highest for those in better physical condition. We encourage our hunters to start getting in shape well before the hunt.



### Non-Resident License

Hunting (all game)	\$85
Hunting & Fishing	\$185

### Non-Resident Tag Fee

Black Bear	\$225
Brown/Grizzly	\$500
Caribou	\$325
Dall Sheep	\$425
Deer	\$125
Moose	\$400
Mountain Goat	\$300
Wolf (number allowed varies)	\$30
Wolverine	\$175

These Prices are subject to change per the State of Alaska - you will be notified in advance of any change in costs.

Location	Unit	Season	Duration	Trophy Size	Altitude	Price	Charter R/T Airfare from Anchorage
Alaska Range	16B	Aug.-Sept.	10 days	35-37" With 13-14" Base	3,500'	\$16,900	\$1,900

# HUNT MOOSE IN ALASKA

ch



It is illegal to hunt on fly-in days in the State of Alaska. Schedule to fly to camp the day before the hunt begins - weather permitting.

Fog/visibility, wind, snow and/or ice may cause delay in departure or arrival of all aircraft. We advise that you allow yourself a flexible schedule while preparing your trip.

Air Charter Fee: Round trip charter fee Anchorage to Kenai -per person.

Due at the time of departure from Bush Plane Basin.

[Alaska West Air](#) accepts credit cards, checks, and cash.

## This Moose Hunt is a Great Hunt!

Location	Unit	Season	Trophy Size	Price	Charter R/T Airfare from Anchorage
Alaska Range	17B	Sept 5-14	Possibility of Record Book w/ heavy fronts	\$17,900	\$1,900 4 hours round trip

**Price Included:** 1x1 guide service; in field transportation which includes drift boats, two prop boats, two Argos, and a super cub; trophy care. Buy a wolf tag before you start your bear hunt. Wolves, saltwater and freshwater fishing are included. Visa:

**Price Excludes:** Alaska Preservation Fund of \$150, all licenses \$85 for U.S. residents and \$300 for International Hunters, and tags \$250-\$650 per species, observer for \$5,200 (includes cost for fishing and wolf hunting), trophy sealing and storage \$450, travel or Global Rescue insurance, gratuities, rifle rental and ammunition cost at \$300, personal expenses of any type such as hotel, use of satellite phones, Anchorage charter flight round trip to camp (approx.\$1,900 per person),

**RESERVATIONS & PAYMENTS:** Per person in U.S. Dollars only, confirmation will be upon receipt of a 50% deposit

with balance due 30 days prior to start of hunt. You must also read, understand and accept by signing the [Terms and Conditions](#), [Release of Liability](#) and the [Hunting Contract](#). All clients must comply with the U.S. Department of the Interior/Fish and Wildlife Services laws, requirements and conditions.

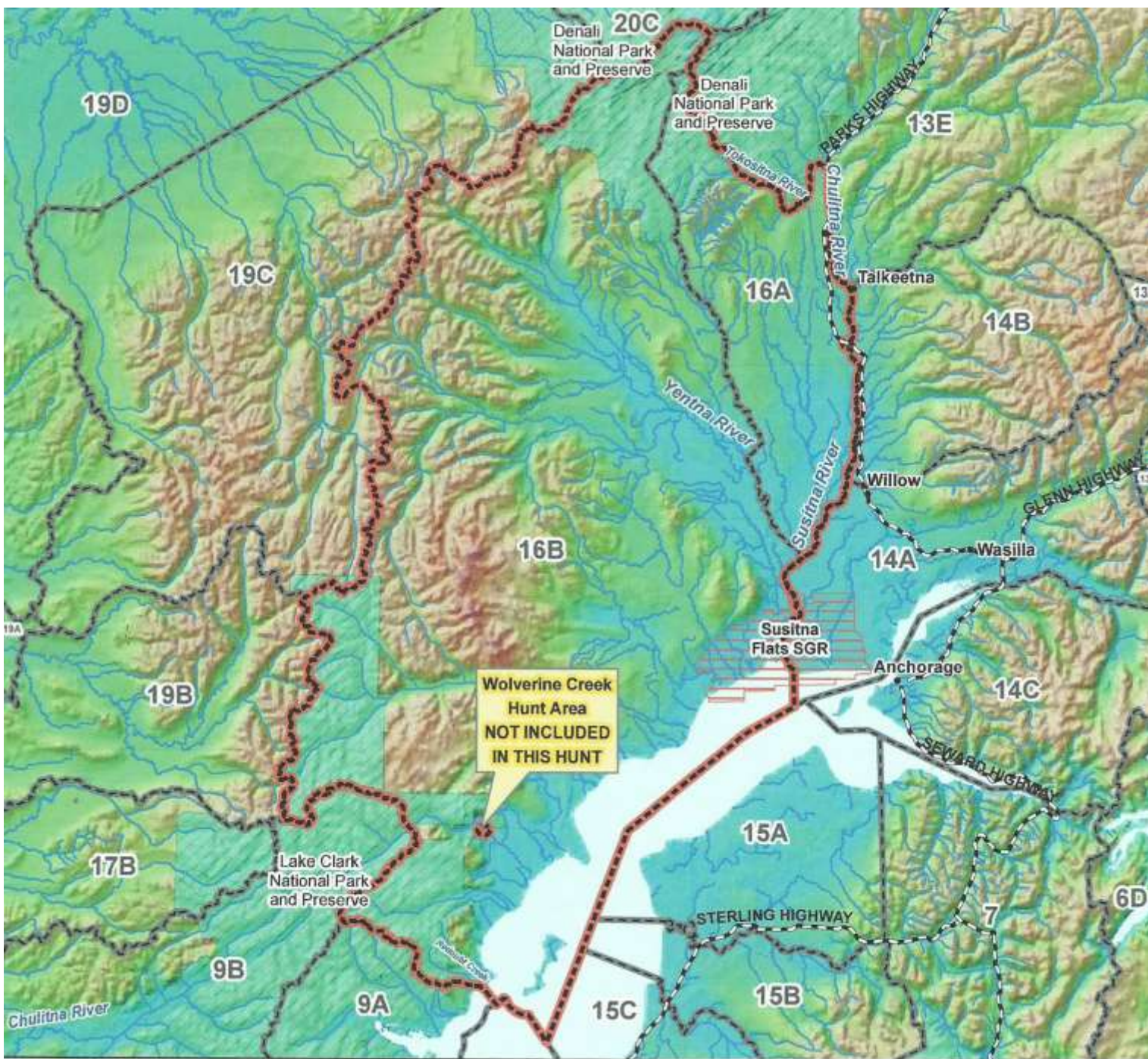


We recommend that you either buy or rent an **Explorer Satellite Telephone**. These telephones offer you unparalleled satellite phone service providing every mobile satellite customer with tailor-made satellite solutions via the Inmarsat, Iridium, Globstar and Thuraya satellite.

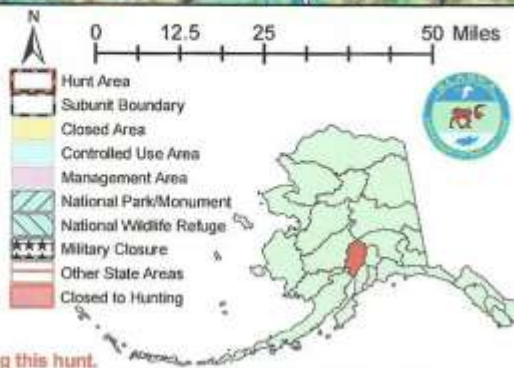
<http://www.explorersatellite.com>

We recommend that you sign up for **Global Rescue**, the world's premier provider of medical & security advisory and evacuation services. Only **Global Rescue** has the field rescue units that will come to help you wherever your emergency occurs, by whatever means necessary. Their corps of deployable paramedics, field rescue specialists and special operations veterans will find you, stabilize you and bring you home. They will also give you medical advice via telephone at no charge. <http://www.globalrescue.com/highmountainhunts/>

We recommend **Travel Guard Insurance** plans designed to cover travelers worldwide. Plans can include valuable medical coverage, trip interruption, emergency travel services and more.



AREA DESCRIPTION: Unit 16, remainder.



Please refer to the Alaska Hunting Regulations booklet for bag type, seasons, and additional regulations concerning this hunt.