



HIGH MOUNTAIN HUNTS

Joel Pat Latham, President

3409 Redstone Drive

Arlington, Texas 76001-6507

www.HighMountainHunts.com

Latham@HighMountainHunts.com

Office: 817-465-3833

Cell: 817-371-4340

HUNT IN NEW MEXICO FOR ELK, MULE DEER AND MOUNTAIN LION .. NO DRAW LANDOWNER TAGS ONLY

This is one of the finest hunting destinations in the West. The ranch boasts a 95% opportunity for Elk and Mule Deer. This location sits astride the historic migration route of the entire Southern Colorado-San Juan elk herd, making this perhaps the most extraordinary elk habitat in the Southwest. The ranch is comprised of 17,000 acres of rich alpine wilderness at the intersection of multiple ecosystems. Mountains, forests, meadows, lakes and streams attract a remarkable diversity of animals, and offer exceptional hunting opportunities for mule deer, bear, spring turkey, mountain lion and of course elk.

This ranch is for those hunters who appreciate the heritage, resources and unmatched beauty of this grand and historic land. It offers world-class big game hunting, as well as many surrounding attractions, historic culture and shopping opportunities available nowhere else. It's an opportunity for sportsmen from around the world to enjoy hunting at its fullest.

The lodge is located just two hours north of Santa Fe, New Mexico in the legendary San Juan Mountains of northern New Mexico just west of Chama on Highway 64. With flight service to both Santa Fe and Albuquerque, and a private airstrip in Pagosa Springs, Colorado which is just 45 miles away, transportation to this ranch is easy.

Situated on a hillside overlooking the Chama Valley, this lodge offers convenience, comfort, great food and spectacular views. Wireless internet service is available throughout the lodge and the cell service is typically excellent. There are 11 comfortably furnished bedrooms, each with two full sized beds, a leather couch or chair and plenty of space for gear. Nine bedrooms have a private bathroom, two share a common bath. Accommodations are spacious and clean, the vistas are truly outstanding.

[Click for More Photos](#) Q



HUNT ELK IN NEW MEXICO 2014

Of all the world's great species of big game, nothing quite matches the American Elk. It is a grand and majestic creature, whose magnificent presence and autumn bugles are a constant reality here at this ranch. Four to six thousand wild elk migrate through the ranch each year. This makes for great hunting every week of the hunting season. Our hunters are continually astonished at the number of elk we have and we surpass expectations every season.

Each hunt is five days long. There are six rifle elk hunt, three archery hunts, and two rifle elk/mule deer hunts currently scheduled between September and late November. The experienced guides will help you navigate the terrain and call in a bull of a lifetime! All elk hunts 2x1.



Page 1

Archery Elk-September

| Hunt | Date | Price | Time |
|------|------------|---------|-------------------------|
| A #1 | Sept 1-6 | \$6,750 | Pre-Rut |
| A #2 | Sept 10-15 | \$7,250 | Premium Rut |
| A #3 | Sept 17-22 | \$7,750 | Premium Peak of the Rut |

Rifle Elk – October

| Hunt | Date | Price | Time |
|------|------------|---------|-------------------------|
| R #1 | Oct 1-5 | \$8,250 | Premium Peak of the Rut |
| R #2 | Oct 7-11 | \$8,000 | |
| R #3 | Oct 13-17 | \$7,750 | |
| R#4 | Oct 19-23 | \$7,750 | |
| R#5 | Oct. 26-30 | \$7,750 | |

Rifle Elk – November

| Hunt | Date | Price | Time |
|-------|---------------|---------|------------------------|
| R #6 | Nov 2-6 | \$7,750 | |
| R #7 | Nov 9-13 | \$8,000 | November Migration |
| R #8 | Nov 16-20 | \$8,000 | November Migration |
| R #9 | Nov. 23-27 | \$7,750 | |
| R #10 | Nov.30-Dec. 4 | \$7,750 | Any legal sporting arm |



Mule Deer and Elk Combo, general ranch, \$16,000

Rifle Bear/Archery Bear – Bear hunting is available for \$3,000. Once your elk or mule deer tags are filled (either archery or rifle hunt), it costs \$1,000 per day to keep hunting for bear.

Rim Rock Class A Game Park

\$8,000 deposit to hunt Rim Rock Park. The deposit will go toward the full price below. Sept 1 – Dec. 15

SCI TROPHY SCORE

| | |
|---------|----------|
| 300-324 | \$10,000 |
| 325-349 | \$12,500 |
| 350-374 | \$15,000 |
| 375-399 | \$17,500 |
| 400-425 | \$20,000 |

Any hunter who has a New Mexico big game hunting license or permit for the prior year must complete a Harvest Report to NMDGF before applying for the current years draw. The deadline to submit Harvest Reports is February 15. Late



HUNT MULE DEER IN NEW MEXICO

This ranch is home to trophy Mule Deer. In 2012, hunters here harvested Mule Deer with an average score of 175 and scores up to 220. If you are looking for your record-breaking Mule Deer trophy, join us in the southern San Juan Mountains for an amazing hunt! All Mule Deer hunts are 1x1.



Lodging does not include alcoholic beverages, but you are welcome to bring your own. However, no alcohol consumption is allowed before or during hunts.

All hunts are five days and six nights allowing plenty of time to achieve your goals and capture your trophy.

Mule Deer Hunt Archery

Mule Deer Muzzle Loader

Mule Deer Rifle

| Date | Price | | | Date | Hunt | Price | | | Date | Hunt | Price |
|-------------|---------|--|--|-------------|------|---------|--|--|------------|-------|---------|
| Sept. 1-6 | \$8,750 | | | Sept. 24-30 | MD#1 | \$9,250 | | | Oct. 18-22 | RD #1 | \$9,500 |
| Sept. 10-15 | \$8,750 | | | | | | | | Oct. 25-29 | RD #2 | \$9,500 |
| Sept. 17-22 | \$8,760 | | | | | | | | | | |

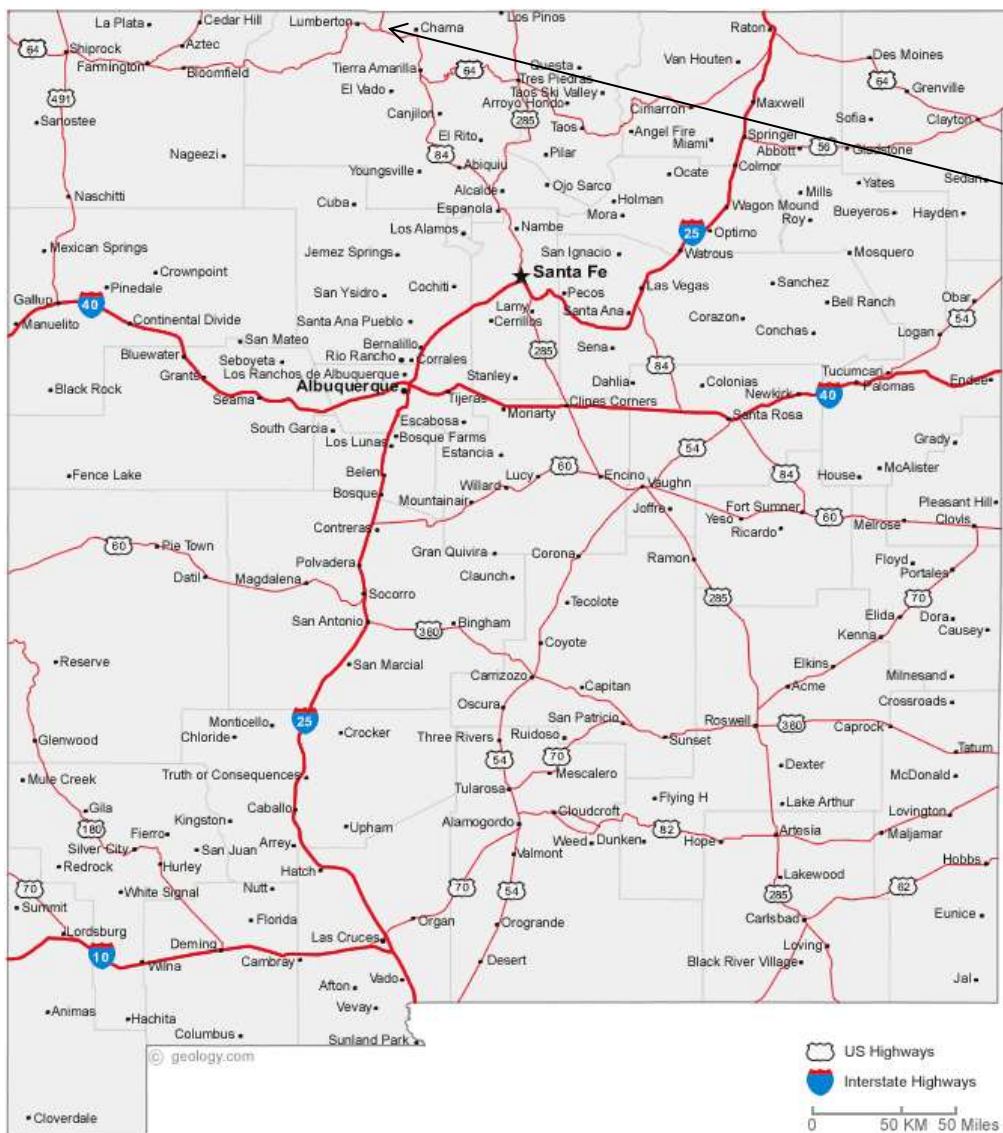
| Hunt | Game | Hunt | Hunt |
|---------------------|-------------------------------------|---------------|---------------|
| Spring Cast & Blast | Turkey, Trout (browns, bows & cuts) | Spring Turkey | Mountain Lion |
| 3 Days, 4 nights | \$3,500 | \$2,500 | \$6,500 |



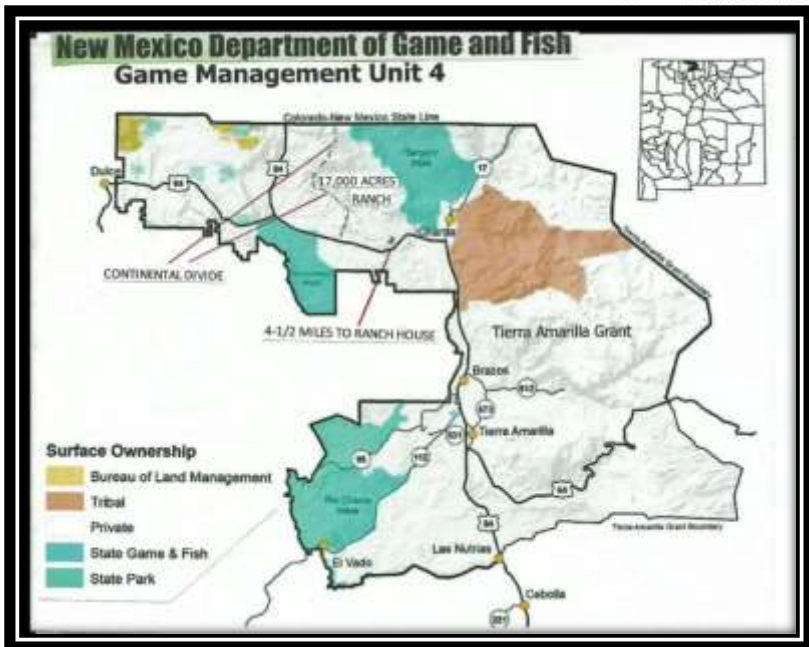
Prices Include: Lodging at the beautiful lodge and three hearty meals per day.

Price Excludes: Firearm or archery equipment, bedroll (wilderness hunts), license, personal gear, meat is processed off premises for next day pickup or can be shipped, special food, cost of medications, immunizations, hospitalizations and services of doctors, charges for evacuation or rescue by ambulance, helicopter or airplane and any other service or product that is not agreed or mentioned in this document.

Reservations & Payments per person in U.S. Dollars only: Confirmation will be upon receipt of a 50% deposit. Balance is to be paid 90 days before your arrival in camp. You must also read, understand and accept by signing the [Terms and Conditions](#), [Release of Liability](#) and the [Hunting Contract](#).



Hunting Area



[Click for Weather](#)

